

## Listino Prezzi TOP 5 (PER IL CORPO VALVOLA):

1° PER RESISTENZA CHIMICA

1° NEGLI AMBIENTI ALIMENTARI

1° PER RESISTENZA A  
TEMPERATURE ESTREME (-50 +  
120°C)

1° PER SICUREZZA  
(AUTOESTINGUENTE ED IGNIFUGO)

1° PER LEGGEREZZA  
(-30% RISPETTO ALLUMINIO)

IL CORPO ED I FONDELLI DELLE NOSTRE VALVOLE  
RISULTANO ECCELLENTEMENTE RESISTENTI ALLE  
SOLUZIONI ACQUOSE DI UNA AMPIA GAMMA DI PRODOTTI  
CHIMICI ED A LIQUIDI E SOLVENTI COMUNI COME:

- IDROCARBURI ALIFATICI
- IDROCARBURI AROMATICI
- SOLVENTI CLORURATI
- SOLVENTI OSSIGENATI
- CHETONI
- ETERI
- GLICOLI
- LIQUIDI FRENI

BUONA RESISTENZA A:

- OLI MOTORE (ES: SAE 10W30)
- OLI IDRAULICI (ES: ISO VG 15/ISO VG 680)
- CARBURANTI PER AUTOVEICOLI

## Price list TOP 5 (FOR THE BODY):

1° FOR CHEMICAL RESISTANCE

1° IN FOOD ENVIRONMENTS

1° FOR RESISTANCE TO  
EXTREME TEMPERATURES  
(-50 + 120 ° C)

1° FOR SAFETY (SELF-EXTINGUISHING  
AND FLAME RETARDANT)

1° FOR LIGHTWEIGHT  
(-30% COMPARED WITH ALUMINUM)

THE BODY AND THE BOTTOMS OF OUR VALVES ARE  
EXCELLENTLY RESISTANT TO AQUEOUS SOLUTIONS  
OF A WIDE RANGE OF CHEMICAL PRODUCTS AND TO  
COMMON LIQUIDS AND SOLVENTS SUCH AS:

- ALIPHATIC HYDROCARBONS
- AROMATIC HYDROCARBONS
- CHLORINATED SOLVENTS
- OXYGENATED SOLVENTS
- KETONES
- ETHERS
- GLYCOLS
- BRAKE FLUIDS

GOOD RESISTANCE TO:

- MOTOR OILS (EG: SAE 10W30)
- HYDRAULIC OILS (EG: ISO VG 15 / ISO VG 680)
- FUELS FOR MOTOR VEHICLES

### Certificazioni



\* a richiesta, on request

### Certifications

### Disponibilità



### Availability

- AFRICA AND MIDDLE EAST
- ASIA
- EUROPE
- NORTH AMERICA
- SOUTH AMERICA

r05.indd 02-2017

PUB00118 listino FCM G1/4 25mm

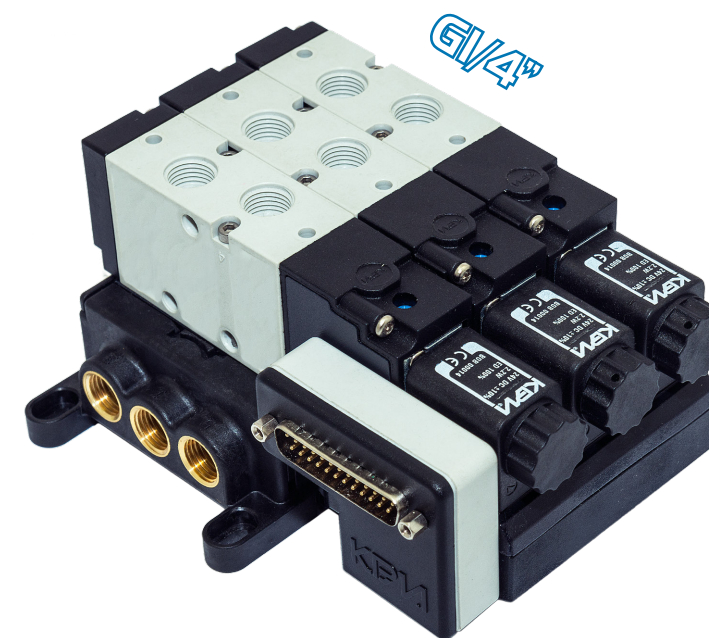


FCM  
G1/4" 25mm



## Listino Prezzi Price list

## Valvole ed Elettrovalvole pneumatiche, ambienti Alimentare e Chimico Pneumatic and Solenoid Valves, Food and Chemical series



GENIUS LINE

“Nullus locus sine genio”

Valair srl - via Piemonte, 22 - Carpi (MO) - Italy - 41012

Tel: +39 059 699343 - Fax: +39 059 641224 - info@kpm.it - www.kpm.it - PIVA 03421300363



### BOB00012

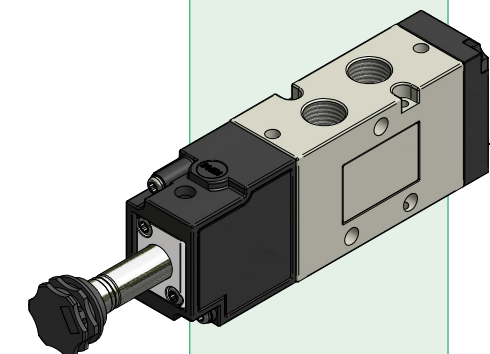
Solenoido - Solenoid 22mm - 24V - DC 3.5 W

### BOB00068

Solenoido - Solenoid 22mm - 24 V - AC 3.5 VA

BOB00012 € 5,00  
BOB00068 € 5,00

Top 5



### FCM960 042

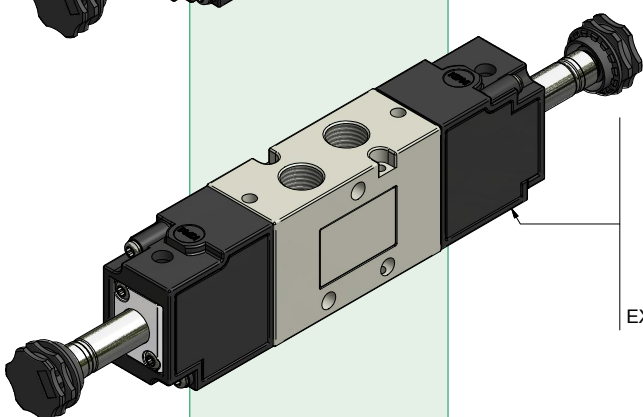
ELETTROVALVOLA BISTABILE  
BISTABLE SOLENOID VALVE

FCM960042 € 52,50

### FCM964 042

ELETTROVALVOLA BISTABILE ASSERVITA  
EXTERNAL SUPPLY BISTABLE SOLENOID VALVE

FCM964042 € 56,25



### FCM962 042

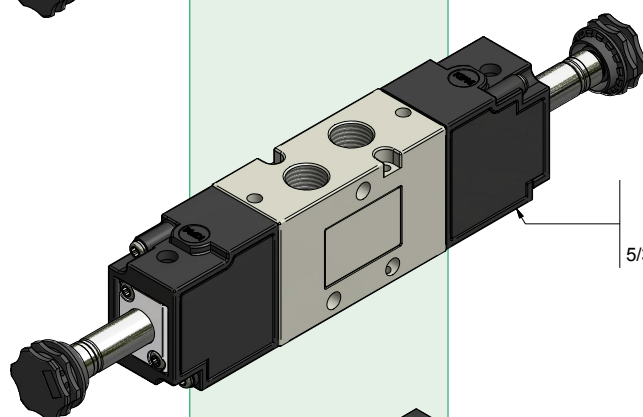
ELETTROVALVOLA BISTABILE  
BISTABLE SOLENOID VALVE

FCM962042 € 68,75

### FCM966 042

ELETTROVALVOLA BISTABILE ASSERVITA  
EXTERNAL SUPPLY BISTABLE SOLENOID VALVE

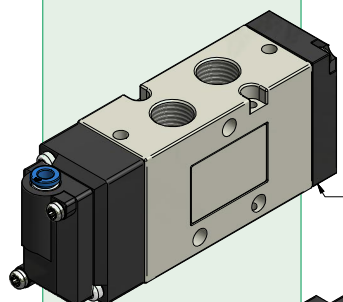
FCM966042 € 78,75



### FCM968 042

ELETTROVALVOLA 5/3 CENTRI CHIUSI  
5/3 CLOSURE CENTERS SOLENOID VALVE

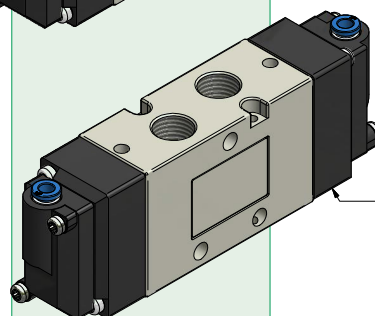
FCM968042 € 88,75



### FCM950 040

VALVOLA MONOSTABILE  
MONOSTABLE VALVE

FCM950040 € 36,25



### FCM952 040

VALVOLA BISTABILE  
BISTABLE VALVE

FCM952040 € 38,75

vedi retro  
see rear

### SBK00155

CHIUSURA CONTATTI ELETTRICI  
ELECTRICAL PIN COVER

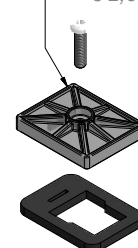
SBK00155 € 1,25



### SBK00069

Coperchio Chiusura Solenoide  
Solenoid Closure plate

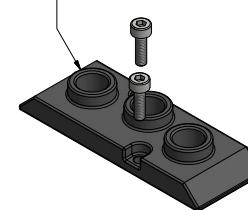
SBK00069 € 2,50



### SBK00388

Piastra Chiusura  
Closure plate

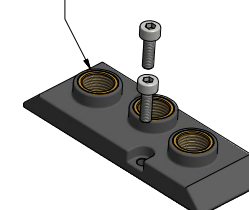
SBK00388 € 4,90



### SBK00390

Piastra Prelievo 3 x G1/8"  
Porting block 3 x G1/8"

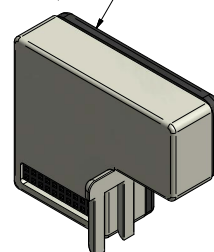
SBK00390 € 11,25



### SBK00147

MODULO CONNESSIONE ELETTRICA DB-25 connector  
DB-25 connector ELECTRICAL CONNECTION MODULE

SBK00147 € 12,50

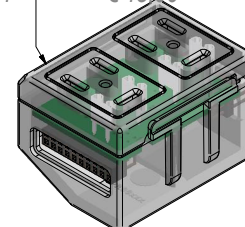


### D.C. = SBK00360

### A.C. = SBK00374

Gruppo connessione Elettrico  
Group of electrical connection  
x 2 valves

SBK00360 € 15,00  
SBK00374 € 15,00

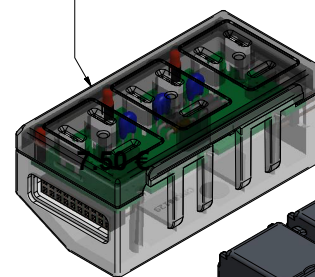


### D.C. = SBK00358

### A.C. = SBK00372

Gruppo connessione Elettrico  
Group of electrical connection  
x 3 valves

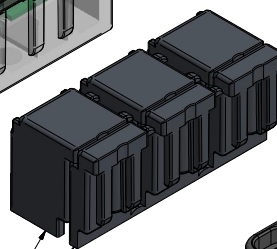
SBK00358 € 22,50  
SBK00372 € 22,50



### SBK00384

DISTANZIALE

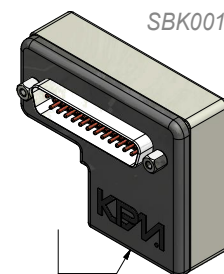
SBK00384 € 2,50



### SBK00366

DISTANZIALE UNIVERSALE

SBK00366 € 2,50



### SBK00147

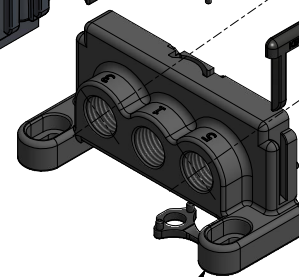
MODULO CONNESSIONE ELETTRICA DB-25 connector  
DB-25 connector ELECTRICAL CONNECTION MODULE

SBK00147 € 12,50

### SBK00151

SOTTOBASE ANTERIORE  
FRONT BASE

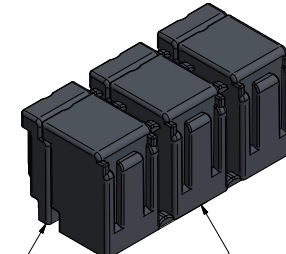
SBK00151 € 8,75



### SBK00384

DISTANZIALE

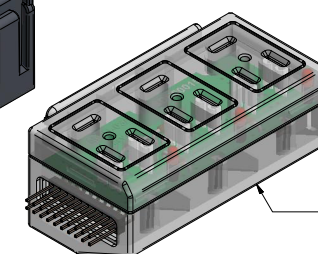
SBK00384 € 2,50



### SBK00366

DISTANZIALE UNIVERSALE

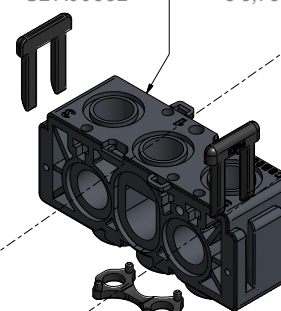
SBK00366 € 2,50



### SBK00382

BASE INTERMEDIA CHIUSA  
CLOSED MIDDLE BASE

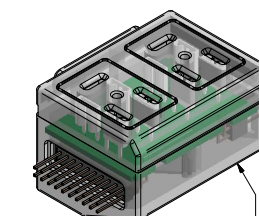
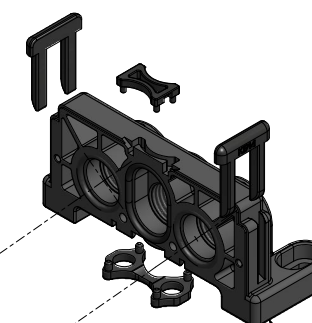
SBK00382 € 8,75



### SBK00152

BASE POSTERIORE  
REAR BASE

SBK00152 € 8,75



### D.C. = SBK00360

### A.C. = SBK00374

Gruppo connessione Elettrico  
Group of electrical connection

SBK00360 x 2 valves € 15,00  
SBK00374 € 15,00

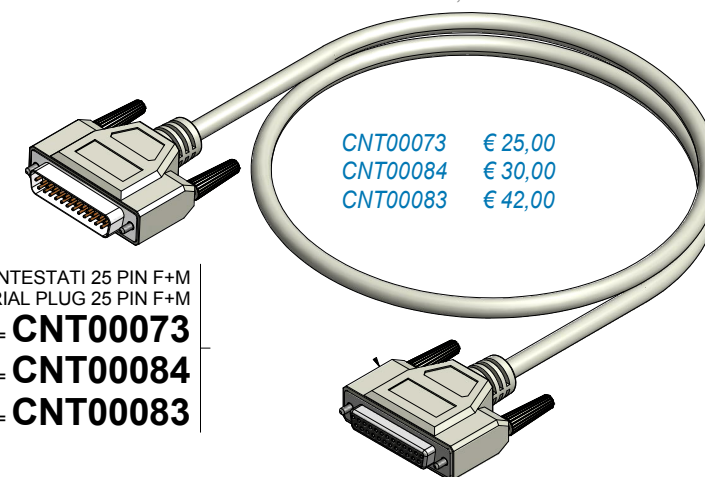
### D.C. = SBK00358

### A.C. = SBK00372

Gruppo connessione Elettrico  
Group of electrical connection  
x 3 valves

SBK00358 € 22,50  
SBK00372 € 22,50

SBK00358 € 22,50  
SBK00372 € 22,50



CAVI INTESTATI 25 PIN F+M  
SERIAL PLUG 25 PIN F+M

1.80 m = CNT00073

3 m = CNT00084

5 m = CNT00083

CNT00073 € 25,00  
CNT00084 € 30,00  
CNT00083 € 42,00